

Creekshead Nature Preserve and The Anthony & Rose Shatter Family Preserve

Conserved by local communities,
managed for local communities.

Creekshead Nature Preserve and The Anthony & Rose Shatter Family Preserve, 27 and 25-acres respectively, make up twin forested oases dotted with button bush swamps and ephemeral wildflowers. Located near the very center of Salem Township, these preserves provide access to the natural landscape for folks from Plymouth to Ann Arbor, to South Lyon and beyond.

It has been a busy year for Legacy, filled with ambition after wrapping up our 50th anniversary as an organization in 2021, we returned to actively planning preserve programming in 2022. Additionally, nationwide trends of increased interest in outdoor recreation since the start of the pandemic have shown true at Creekshead and Shatter, with an estimated doubling of preserve visitors between 2019 and 2020. The number of trail users has continued to rise since, with increased programming and improved access contributing to the ongoing rise.

Improved Access, Increased Programming

After our preserve events came to a grinding halt in 2020, we wanted to ease back into work with the public in a measured way. So, this year we kicked off the spring with an earth day event great for folks that are still feeling a bit cautious, a self-guided hike at Creekshead. For our self-guided hike, we partnered with Alpha Phi Omega, an Eastern Michigan University service group to put together informational signs exploring how Legacy helps mitigate climate change locally. Our Earth Day signs were composed almost entirely of recycled materials donated by SCRAP Creative Reuse, a non-profit located in Ypsilanti.



In addition to the self-guided hike, we've provided further solo recreational opportunities on our preserves recently through the installation of geocaches. So, what is geocaching? The simple answer: geocaching is a type of global treasure hunt of people looking for hidden stashes of objects. To learn more or get started, visit www.geocaching.com

Environmental Research in Salem Township

Led by Legacy's 2022 Huron Pines AmeriCorps Member, Ally Audia, we've begun a study quantifying the presence/absence of reptile and amphibian populations at Creekshead.

Our methods to study elusive species like salamanders and snakes uses "Coverboards," made of wood throughout the preserve. Reptiles and amphibians will frequently look for hiding places under rocks and logs. These boards allow us to provide "cover" that can easily be removed/moved at select intervals to study the populations underneath.

We look forward to wrapping up the study at the end of 2023, and plan to replicate the research at Shatter beginning in 2024!

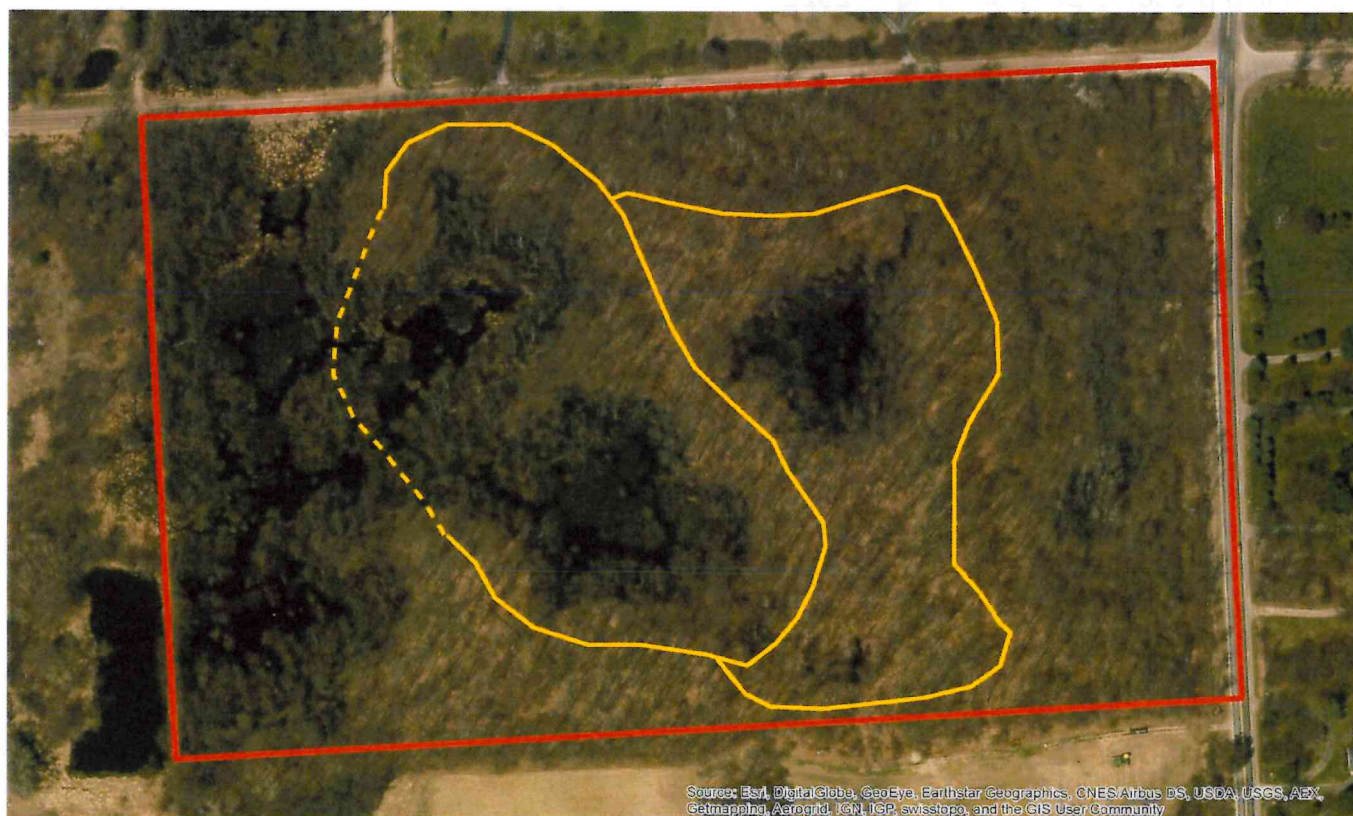
Creekshead Nature Preserve and The Anthony & Rose Shatter Family Preserve

Phase one of Shatter Trails – Complete!

Legacy Land Conservancy is excited to announce the completion of Phase 1 of the Shatter Family Preserve Trail Project. Phase 1 consists of 362 feet of newly constructed boardwalk divided into several segments along the trail system! This will allow visitors to avoid particularly wet and flooded areas of the trail, while still enjoying all the beautiful natural area Shatter has to offer.



Phase 1 was generously funded through a grant provided by the Speckhard-Knight Charitable Foundation.



Shatter Family Preserve - Proposed Trails

Date last updated: 9/28/2018

0 150 300 600 Feet

-  Preserve Boundary
-  Trails - Phase I
-  Trails - Phase II

